



Product Data Sheet for SCOTT® XTRA Hand Towels - Interfolded / White /Small - 6677

Product Information

Product Long Code 06677080
Customer Facing Code 6677
Description SCOTT® XTRA Hand Towels - Interfolded / White /Small
PDS Reference 16/11/2018



Packaging Configuration

Case Contents 15 Clips x 320 Sheets = 4800 Sheets
Outer Pack Material Paper

| Icon | Unit | Dimension | | | | Weight(kg) | | |
|------|-------|-----------|---|-------|---|------------|-----------------------------|------|
| | Clip | 20.00 | x | 10.60 | x | 13.00 | Length x Width x Height(cm) | 0.40 |
| | Sheet | 21.00 | x | 20.00 | | | Length x Width(cm) | |

Product Description

SCOTT® hand towels are softer, more absorbent and stronger than conventional towels, providing consistent quality at an affordable price. The clever, interfolded design helps to prevent towels from ripping when being pulled from the dispenser, and ensures only single towels are dispensed each time, reducing mess and wastage. The unique Airflex* technology ensures that each lightweight single-ply towel is absorbent and strong, even when wet, preventing them from becoming soggy or ripping. SCOTT® hand towels carry the European Ecolabel; your guarantee that they are manufactured responsibly at every step of the process. This product is sold as a case of 15 packs x 320 white, 1 ply sheets (4,800 total). Individual sheet size 21cm (L) x 20cm (W). Compatible with AQUARIUS* Folded Hand Towel Dispensers (product codes 6945 and 7171) and KIMBERLY-CLARK PROFESSIONAL* Folded Hand Towel Dispensers (product code 9962 and 8971). 15 packs x 320 white, 1 ply sheets (4,800 total)

Product Features

- 15 packs x 320 white, 1 ply sheets (4,800 total)
- Carries the European Ecolabel
- Interfolded hand towels that dispense one at a time, reducing waste and keeping refill frequency and costs to a minimum
- Compatible with AQUARIUS* Folded Hand Towel Dispensers (product codes 6945 and 7171) and KIMBERLY-CLARK PROFESSIONAL* Folded Hand Towel Dispensers (product code 9962 and 8971).
- Made using our unique Airflex* Technology. Soft, strong & highly absorbent, even when wet.
- Ideal for use in food contact areas and busy washrooms

Product Data Sheet for SCOTT® XTRA Hand Towels - Interfolded / White /Small - 6677

Product Specifications

| | | | |
|-------------------------|------------------------------------|---------------------------|----|
| Fold Type | I | Virgin Fibre(%) | 10 |
| Bleaching Method | Elemental Chlorine Free (ECF) | Embossing/textured | No |
| Technology | Uncreped Through Air Dried (UCTAD) | Plies | 1 |
| Bar Code (Case) | 05027375024528 | Recycled Fibre(%) | 90 |
| Colour | White | | |

International Standards and Symbols

Solution

Healthier Workplace

The HEALTHY WORKPLACE PROJECT* is a comprehensive office hygiene programme which helps engage employees and reduce sickness.

Standard R+E

Food Contact Regulations

This product is suitable for food contact and complies with Regulation (EC) No. 1935/2004. Furthermore, nitrile rubber gloves comply with Regulation (EC) No. 10/2011 and German Recommendation, BfR No. XXI, and paper products comply with German Recommendation, BfR No. XXXVI.

AIRFLEX* Technology

AIRFLEX*

Compression

KIMBERLY-CLARK PROFESSIONAL* is using new air compression technology to fit up to 18% more paper hand towels into each case, resulting in a range of commercial and environmental benefits. The technology is being applied across a range of KLEENEX and SCOTT Hand Towels manufactured using AIRFLEX* Fabric. Compressed AIRFLEX* Fabric towels will continue to offer superior absorbency and strength and outstanding levels of hygiene and comfort. Along with the following additional benefits: Environmental, it means more towels per truck so fewer trucks on the road. Packaging waste is also reduced. End-users will now need to use less warehouse storage space for the same amount of hand towels, while more towels in each sleeve will mean fewer refills are required.

Trade

ISO 14001

ISO 14001 is an international environmental standard. Designed to help organisations ensure that operations comply with environmental laws, and; major environmental risks and liabilities are properly identified, minimised and managed.

ISO 9001

This gives the requirements for quality management systems, is now firmly established as the globally implemented standard for providing assurance about the ability to satisfy quality requirements and to enhance customer satisfaction in supplier-customer relationships.

Regulation (EC) No 66/2010 of the European Parliament

The European Ecolabel scheme encourages businesses to market products and services that are kinder to the environment. Only products that meet strict environmental standards are entitled to use the Ecolabel accreditation.

Product Data Sheet for SCOTT® XTRA Hand Towels - Interfolded / White /Small - 6677

Packaging

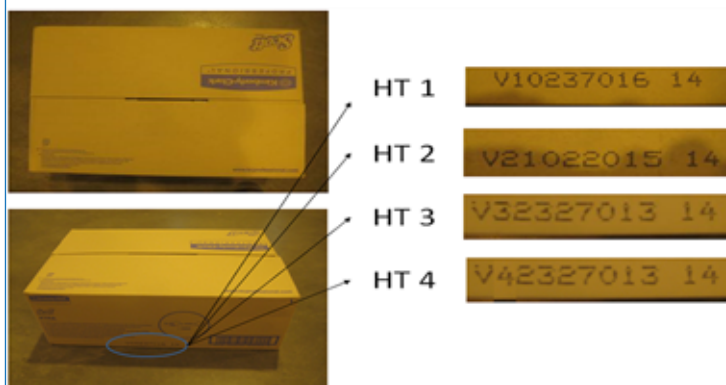
| | | | |
|----------------------------|-------|-----------------------------------|--------------------|
| Unit Of Sale | Case | Net Weight(kg) | 5.58 |
| Max Weight(kg) | 6.79 | Case Dimension (LXWXH)(cm) | 55.4 x 39.5 x 22.3 |
| Inner Pack Material | Paper | Full Pallet | Yes |

| Pallet Type | LxWxH (m) | Cases per Layer | Layers per Pallet | Cases per Pallet |
|-------------|--------------------|-----------------|-------------------|------------------|
| A2 | 1.20 x 1.00 x 1.26 | 5 | 5 | 25 |

Related Products

| Product Code | Description | Recommendation |
|--------------|--|----------------|
| | Fits Dispenser | |
| 6945 | AQUARIUS* Folded Hand Towel Dispenser - Interleaved / White | ✓ |
| 7171 | AQUARIUS* Folded Hand Towel Dispenser - Interleaved / Black | |
| 9962 | KIMBERLY-CLARK PROFESSIONAL* Folded Hand Towel Dispenser - Interleaved / White | |
| 8971 | KIMBERLY-CLARK PROFESSIONAL* Hand Towel Dispenser - Stainless steel | |

Batch Code



Information

It is the employer's responsibility to assess the risk of the task to be undertaken and determine the correct choice of wipers for the task. The manufacturer, Kimberly-Clark, does not accept any responsibility for the incorrect choice or misuse of wipers shown in this brochure. All care has been taken to ensure that the information contained herein is as accurate as possible at the time of publication, however errors may occur and legislation concerning personal protective equipment is under constant review and may change in the lifetime of this brochure. Accordingly, the specifications for the products may be subject to change. We would advise you to contact INFOFAX if you have any queries concerning the products shown or the suitability of such products for the particular task. Always dispose of used protective equipment in a safe and appropriate manner in accordance with European, National and Local environmental regulations

| | | | |
|--------------------------------|---|-----------------|--------------------------|
| Infobox Details | infofax@kcc.com | Websites | www.kcprofessional.co.uk |
| Customer Service Number | For more information please contact Customer Service during regular office hours-0870 551 044 | | |
| Country of Origin | FRANCE | | |